

RADIO ACCESSORY CONN  
PINS 11-13 N/C

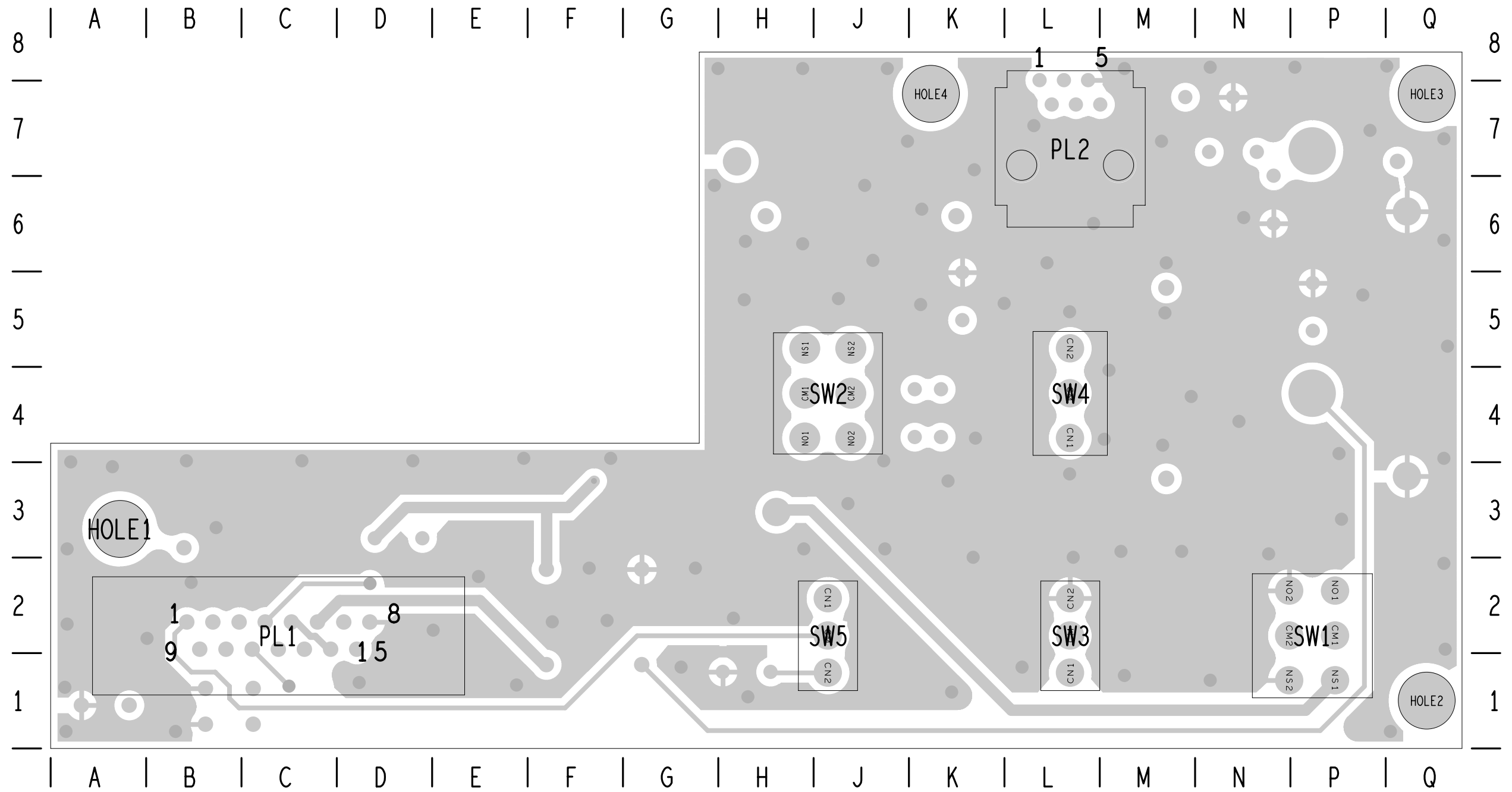
SW1 HAS 3 POSITIONS, BUT SYMBOL IS INCORRECT.


POWER RATING FOR R1 AND R2  
COMBINED IS 5W.

SW3 AND SW5 HAVE 2 POSITIONS,  
BUT SYMBOL IS INCORRECT IT SHOWS A 3 POSTION SW.

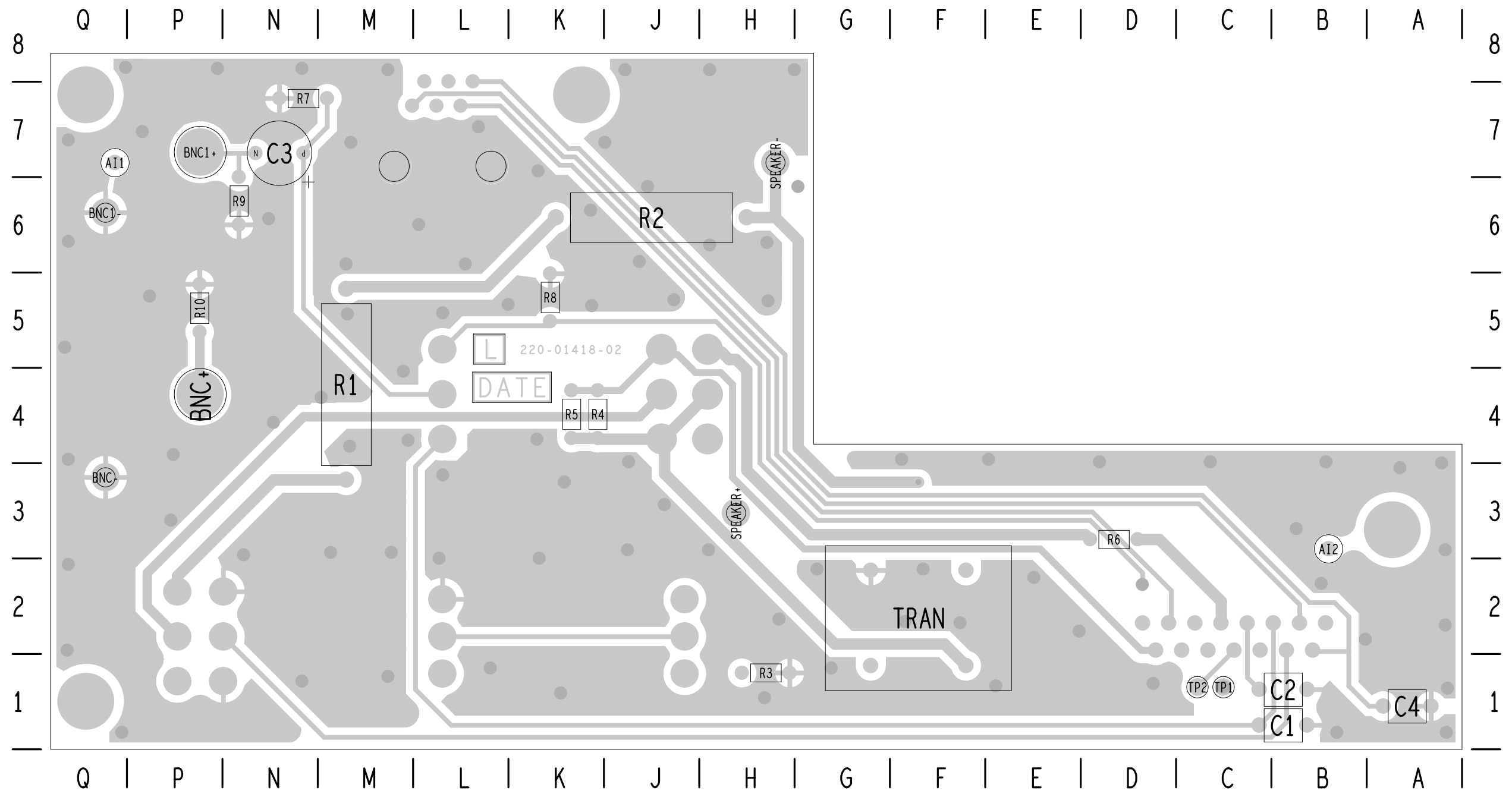
© TAIT ELECTRONICS		A2
TM8000 and TOP		
CALIBRATION BOARD		
IPN:	ISSUE:	VARIANT NUMBER:
220-01418-02	A	?
FILE DATE: Mon Feb 17 11:40:04 2003		
ENGINEER:	FILE NAME:	SHEET NUMBER:
Jimmy Y	220_01418	1 OF 1


02A	MIGRATED AND REDESIGNED	BRD	X	X	X	17/02/03
REV/ISS	AMENDMENTS	DRAWN	CHKD	D. O.	APVD	DATE



 <b>TAIT ELECTRONICS</b>	IPN:	AssyISS:	DATE:
	220-01418-02A	A	17Feb03
PHOENIX TM8000 Calibration PCB LAYOUT-PRIMARY-SIDE			

NOT TO SCALE



 <b>TAIT ELECTRONICS</b>	IPN:	AssyISS:	DATE:
	220-01418-02A	A	17Feb03
PHOENIX TM8000 Calibration PCB LAYOUT-SECONDARY-SIDE			

NOT TO SCALE